



HOLTSTEAD CHAROLAIS



The Holtstead herd of pedigree Charolais was established in 1979 alongside pedigree Simmentals and later pedigree Aberdeen Angus. The Simmentals and Angus achieved much success in both the sale and show rings including a handful of Breed & Supreme Championships in Borderway Carlisle for both breeds.

Today, we are only concentrating on the Charolais breed which we truly believe is the strong breed of the future and one which we have backed for many years.

The herd has been built on a foundation of quality females and whilst selection is based on performance traits, we highly prioritise temperament and correctness.

A Holtstead female will have the integrity of breeding and the depth of pedigree you can trust. Our bulls are 'fed to live' whilst at the same trying to show their potential. We believe this helps them to give many years of service for our customers.

After a long period of herd reduction, two main female lines have been preserved, namely those from **Ditchburn Uganda** and **Lakeland Sagesse**. From these dam lines, we have a strong female team who are both successful in the show ring and are proving to be excellent breeders.



Holtstead Pascal who goes back to Sagesse

The Lakeland Sagesse damline was started with the purchase of two Sagesse daughters back in the 1990's and through careful sire choices using A.I. the line produced some great stock. This included Holtstead Pascal, a great big, fleshy female who proved an exceptional asset. She went on to breed some well muscled bulls and **Holtstead Tarks** (Baggrave Minstrel) and **Holtstead Velvet** (Gretnahouse Noel). Holtstead Tarks subsequently bred two outstanding females: **Holtstead Veronique** (Gretnahouse Noel) and **Holtstead Addition** (Doonally New) both retained in the herd. She also bred **Holtstead Debutante** (Gretnahouse Noel) who was Female Champion at Carlisle May 2010 and sold to Messrs McCann in N. Ireland for 3,200gns. Holtstead Addition produced **Holtstead Delightful** (Dingle Hofmeister) who sold at Carlisle May 2010 for 4,000gns to S H K Butcher, Fleets.

Holtstead Velvet is perhaps her most well known calf as she achieved so much in the show ring and is now breeding exceptionally well in the herd.

Velvet's four outings to the showing consisted of:

Great Yorkshire 2005
Junior Female Champion and member of **winning Junior Interbreed team**
Great Yorkshire 2006
Female & Breed Champion, Interbreed Champion Pairs winner with Holtstead AnotherHolly
BCCS Scottish National/Cumberland County 2006
Senior & Overall Female Champion, Breed Champion & Interbreed Champion, Champion of Champions of the show.
BCCS Welsh National/Oswestry Show
Senior & Overall Female Champion, Breed Champion & Res Interbreed Champion
(Velvet was shown against respective female champions of the Royal, Royal Welsh & Royal Highland in each of these selected shows).



Holtstead Velvet (2 yrs) Great Yorkshire Show

"Velvet was the obvious winner. She is very correct throughout and has good locomotion, in fact she demonstrates all the breeds characteristics and is everything a Charolais should be. This is a heifer with everything. She has scale, demonstrates correctness and true breed character - she is the type of Charolais for our future"

Brian McAllister speaking after the Welsh National

"Velvet is quite simply - faultless"

Champion of Champions Judge Jamie Fisher, Cumberland County



Holtstead Velvet - Welsh National



Holtstead Cracker (Holtstead Velvet/Burradon Talisman)

Velvet's first calf **Holtstead Cracker** (Burradon Talisman) was shown once before being sold to the Culford herd as their herd sire. Cracker took the Male and Junior Championships and Res Junior Interbreed at the Great Yorkshire Show 2008.

His calves are doing well, with **Culford Hector** taking the Male Championship at the English National 2013 and **Twomacs Hitman** taking second in the same show.

Our congratulations to Messrs Knox, McMillan & McInnes with their success.



Culford Hector (sire Holtstead Cracker) Male Champion English National 2013

Velvet's first heifer calves (ET's Emilia & Emma) by Dingle Hofmeister, were shown once as yearlings taking first and second at The East of England's BCCS English National show 2010. **Holtstead Emilia** was presented once in 2011 taking Female & Res Breed Champion at the Great Yorkshire Show.

She now stands as a huge cow in the herd and has had a lovely first heifer calf by Bleack Digger.

Velvet's natural calf to Dingle Hofmeister is **Holtstead Gina** who is very promising and is now served.



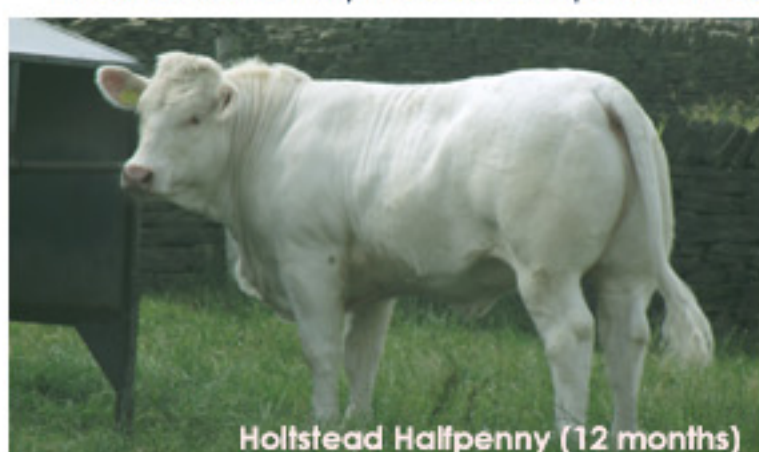
Holtstead Emilia (yearling)



Holtstead Emilia (2 year old)

Velvet's latest heifer, **Holtstead Halfpenny** is full sister to Holtstead Cracker being by Burradon Talisman. She is we feel a great heifer even as a yearling and we look forward to seeing her progress.

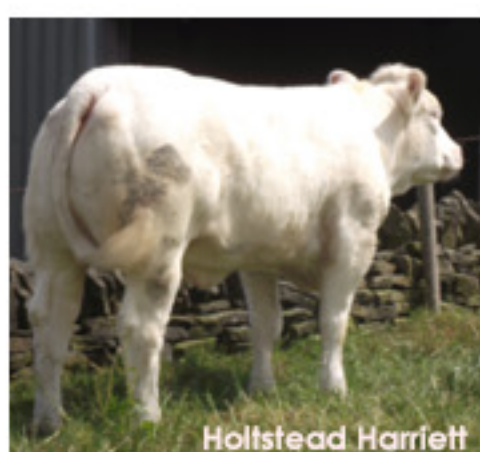
She was shown along with another Holtstead yearling **Holtstead Harriett** (Burradon Talisman) this year at the Great Yorkshire where they took second place in the pairs event.



Holtstead Halfpenny (12 months)



Holtstead Harriett (12 months)



Holtstead Harriett

Our other dam line, from **Ditchburn Uganda** has produced some outstanding cattle too. Uganda herself produced some great bulls sold in Perth such as Holtstead Formidable, selling to JCB Farms, Staffs and Holtstead Glenfiddich. Holtstead Alexandra topped the market in Banbury as our cattle often did when Banbury market was a most important Charolais sale. However her most successful female was from an embryo flush (one of the first Charolais flushings) Holtstead Ella, who produced **Holtstead Holly** (Newthrus Regal). Holly was our first significant show female back then and has produced numerous good bulls and heifers. Rascal & Rafferty (Simpsons Gregg) both sold for 5,500gns each in Carlisle & Perth.

Their sister **Holtstead Sophie** (Killadeas Jack) went on to breed some outstanding females, including: **Holtstead AnotherHolly**, **Holtstead CremedeHolly**, **Holtstead DoubleHolly** (sold Carlisle May 2010 for 2,200gns), **Holtstead EmdeHolly** (Christmas Cracker Champion 2012, sold 5,500gns to H P Whittaker) and **Holtstead GemdeHolly** (sold privately to Redhead & Watson). Holtstead CremedeHolly's first calf **Holtstead Faberge** (Dingle Hofmeister) was offered in Carlisle May 2013 and sold for 6,500gns to Judith Hunter.



Holtstead AnotherHolly (Gretnahouse Noel) 5yr old Female & Res Champion Great Yorkshire 2010



Holtstead CremedeHolly @19mths (Burradon Talisman) Breed & Junior Interbreed Champion Great Yorkshire 2009



Holtstead EmdeHolly (Cracker Champion 2012) Breed Champion Great Yorkshire 2013 for H P Whittaker



Holtstead Faberge, sold 6,500gns (Reserve Female Champion Carlisle May 2013)

NEWS - Congratulations to Messrs Mackay with their Perth Junior Champion **Clyth Diplomat** (see right), a grandson of **Holtstead Rebecca** and now in the ownership of Mr Brian McAllister



RECENT AQUISITIONS - 2010

The Holtstead herd has been closed for over 14 years, our last purchase was in Perth securing Beauchamp Flair out of the great Lakeland Sagesse.

However, at the Scottish National 2010, we were particularly impressed by an outstanding young heifer, Edenhurst Desiree who stood reserve to our cow Holtstead AnotherHolly.

We were delighted to view her again at the Christmas Cracker where she stood a worthy Champion and we subsequently secured her for 8,000gns.

She now stands well in our herd with our other champion females. She has a TI+55 and SRI+59.

Congratulations to Peter Vasey and family with their success with Desiree (who incidentally now has the stable name 'Spud'!!)



Edenhurst Desiree - 8,000gns

The Holtstead herd is Signet recorded and a member of the SAC Premium Health Scheme.

The herd is tested clear for BVD, IBR, Lepto, Johnes, Brucellosis and TB.

For more information on any of the cattle shown or enquiries for bulls, please do not hesitate to contact Fred, June or Emma Andrews

Holtstead Charolais, Holt Farm, Holt Lane, Holmfirth, West Yorkshire, HD9 3BW.

Tel: 01484 682571 / 07831 309504

e-mail: emma@englishgardenandhome.co.uk